



**Evidence.**  
**Show me the money (RCT etc etc)**

**Learning Session One**

# Classic evidence

CLAB rate was reduced to:

- 1.36/1000 line days over a 4 year period in 69 ICUs in South Western Pennsylvania  
CDC MMWR reported in JAMA 2006; 269-270
- 1.44/1000 line days in 46 ICUs in New York State  
Koll BS, Straub TA, Jalon HS et al Jt Comm J Qual Patient Saf 2008; 34:713-723
- 1.7/1000 line days in 9 VA Hospitals, Midwest, US  
Bonello RS, Fletcher CE, Becker WK et al. Jt Comm J Qual Patient Saf 2008; 34:639-645
- 1.4/1000 (mean) line days in 103 ICUs in Michigan  
Pronovost et al NEJM 2006
- A regional collaborative involving 44 ICUs is underway in Tuscany  
S Rodell, Forni S, Castagnoli M et al (abstract). Qual Saf Health Care 2008;17:20-21

Target  
**CLAB ZERO** 

# Campaigns

Safer Healthcare Now

IHI Five million lives

Scottish Patient Safety Programme

Notice the progressive spread.....

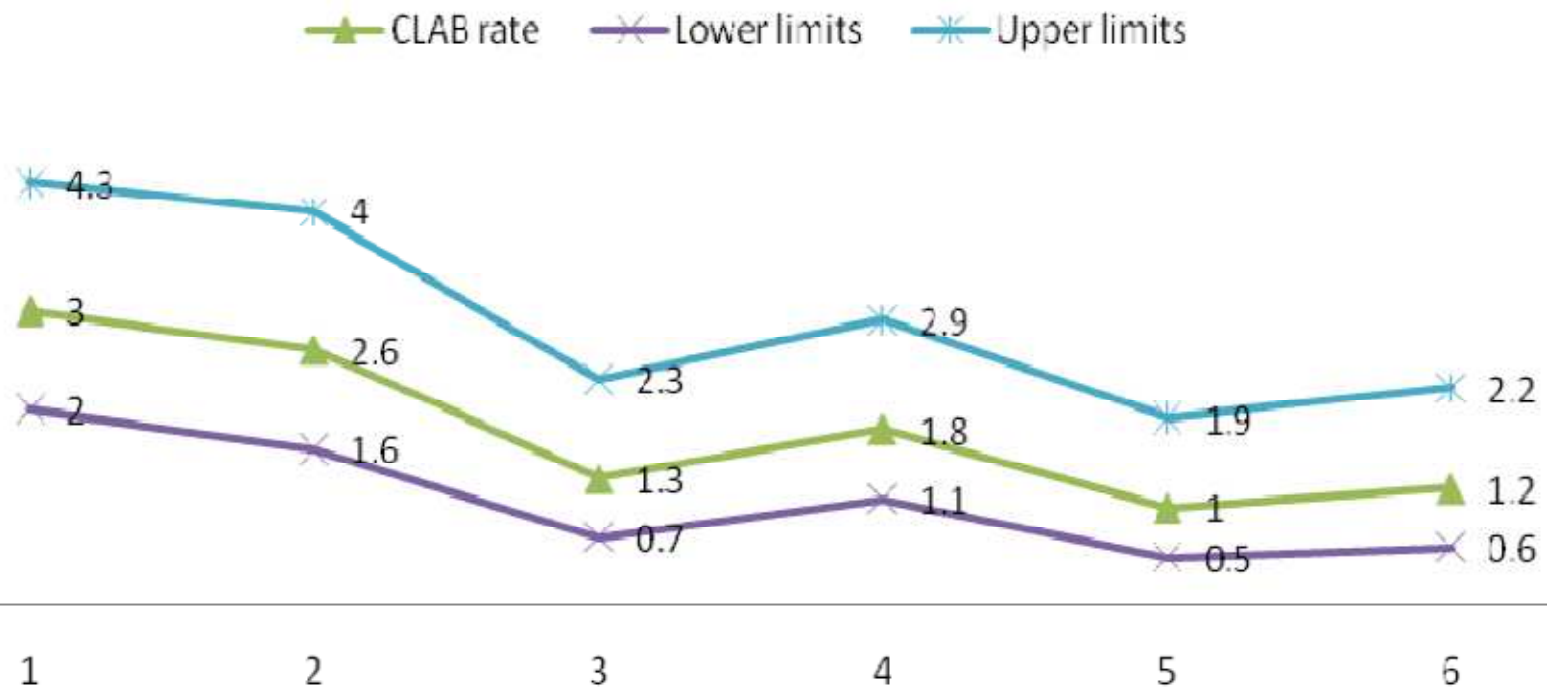


# Classic evidence NSW

- 36 Adult ICUs
- 10575 CVLs over 18 months
- Same interventions and collaborative

# Classic evidence NSW

## CLAB rate/1000 line-days by Quarterly project periods



# Classic evidence NSW

- CLAB rates dropped (0.0006)
  - 3.8 to 1.6 per1000d over the first 12 months
- Time to CLAB increased
  - 1.8 at day7 to 0.9 at day9

# Classic evidence NSW

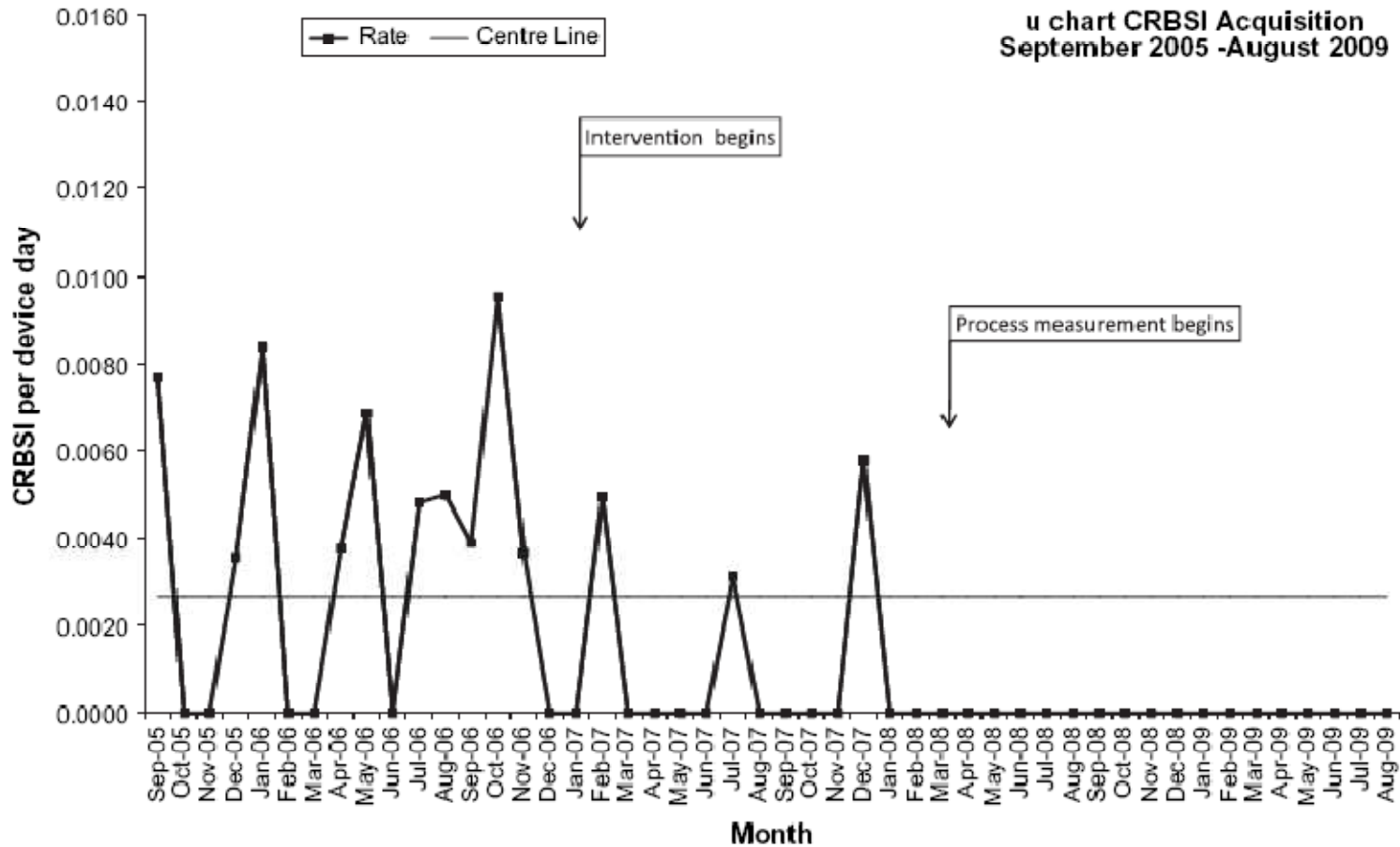
- Non compliance with the 'clinician bundle':
  - relative risk of CLAB was RR 1.62 (95% CI 1.1-2.4,  $p=0.0178$ )
- If compliant with both 'clinician bundle' and 'patient bundle' then risk of CLAB was RR 0.6 (95%CI 0.4-0.9,  $p=0.0103$ )

# NZ Data

- Presented soon.



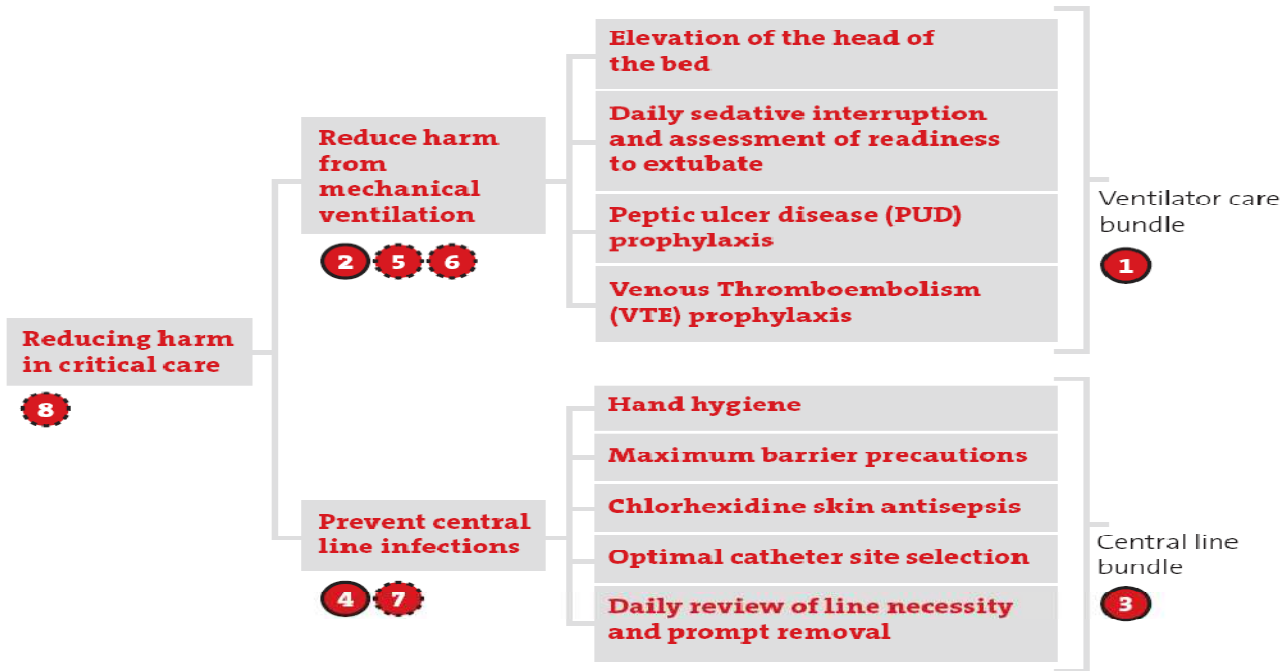
# Stirling example



# Stirling example



# SPSP



- 1 Ventilator Care Bundle compliance
- 2 Days between Ventilator Associated Pneumonia (VAP)
- 3 Central Line Bundle compliance
- 4 Days between Central Line Infection (CLI)
- 5 VAP rate
- 6 Ventilator length of stay
- 7 CLI rate
- 8 Length of stay in ICU
- Recommended Campaign measure
- Additional measure

# Ubercollaboratives

- IHI will link SPSP and Sweden to NZ
- NSW are “expert advisors” to NZ

# But..

- Technical options cant answer Adaptive questions..
  - Cargo airport
- Why is TRIPS hard?
- Why is regionalisation hard?
- Why have collaboratives worked

# Because..

- They utilise natural networks
  - Collegial
  - Problem focused
- They form organisation and culture
  - Emergence
  - Culture

# Collaborative (n)

- Asynchronous learning between agents of varying ability
  - All agents are each working towards the same goal
  - Reflection, conflict resolution and reframing
  - Generate active participation

Vygotsky