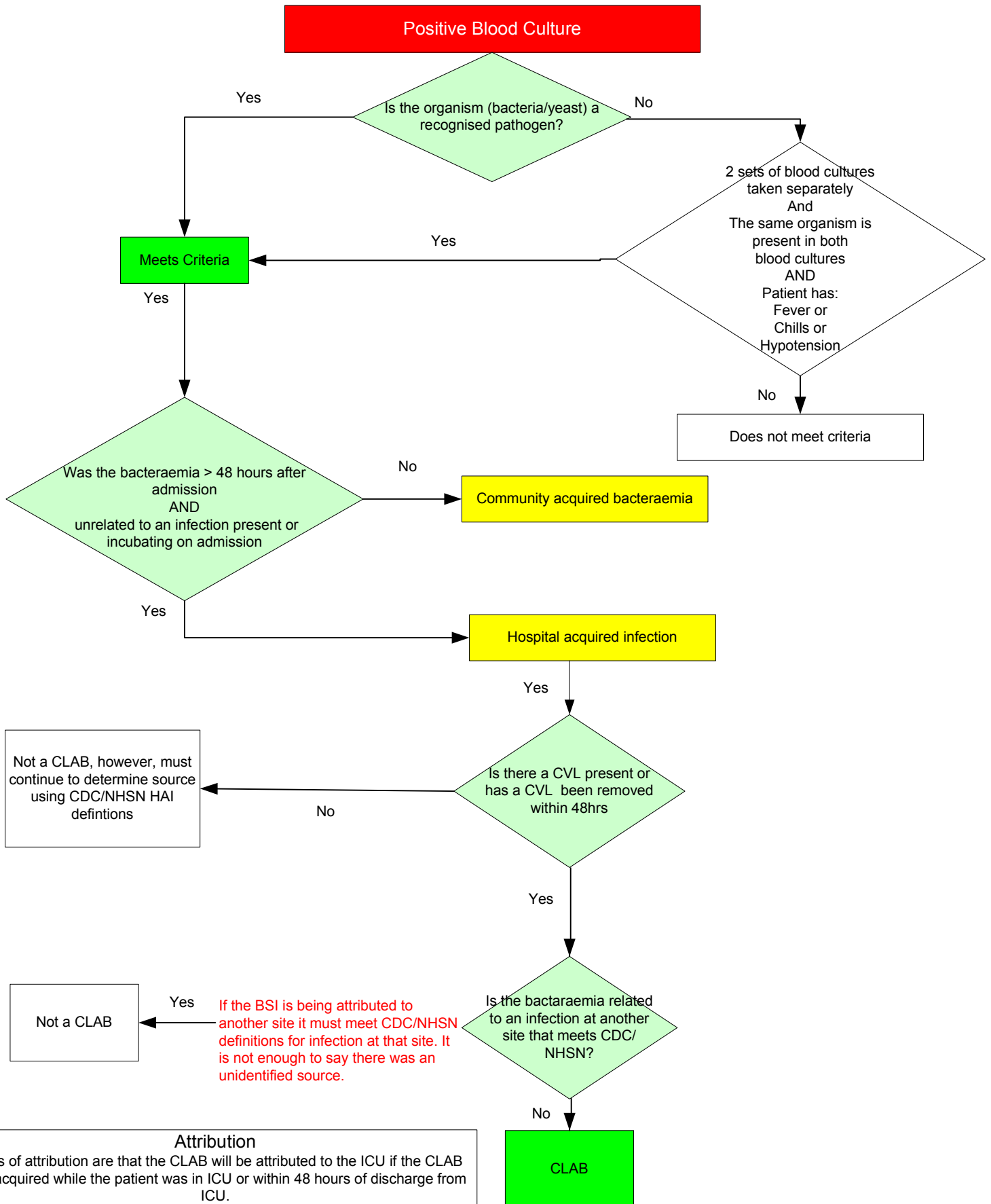


# Surveillance Process for Determining CLAB



<http://www.cdc.gov/nhsn/PDFs/pscManual/>

<http://www.cdc.gov/ncidod/dhqp/pdf/nnis/NosInfDefinitions.pdf>

[http://www.asid.net.au/hicsigwiki/index.php/title=NHSN potential contaminant organisms](http://www.asid.net.au/hicsigwiki/index.php/title=NHSN%20potential%20contaminant%20organisms)

**The bloodstream event must meet one of the following three criteria** (criteria 1 and 2 may be used for patients of any age, including < 1 year of age):

**Criterion 1:** Patient has a recognised pathogen cultured from one or more blood cultures and organism cultured from blood is not related to an infection at another site.

**Criterion 2:** Patient has at least one of the following signs or symptoms:

fever (>38°C); chills; or hypotension;

and displays: signs and symptoms of infection and positive laboratory results are not related to an infection at another site and common skin contaminant is cultured from two or more blood cultures drawn on separate occasions.

**Criterion 3:** Patient < 1 year of age has at least one of the following signs or symptoms:

- fever (> 38°C, rectal);
- hypothermia (<37°C, rectal);
- apnea;
- or bradycardia

and displays signs and symptoms or infection and positive laboratory results are not related to an infection at another site and common skin contaminant is cultured from two or more blood cultures drawn on separate occasions.