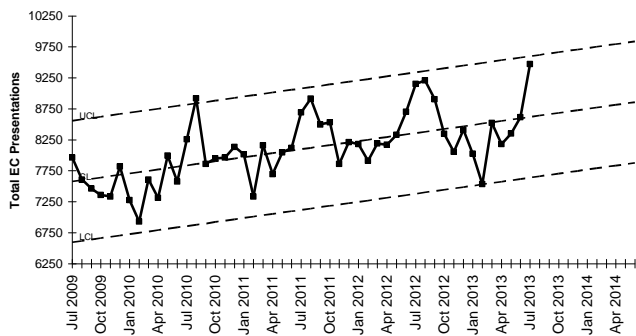


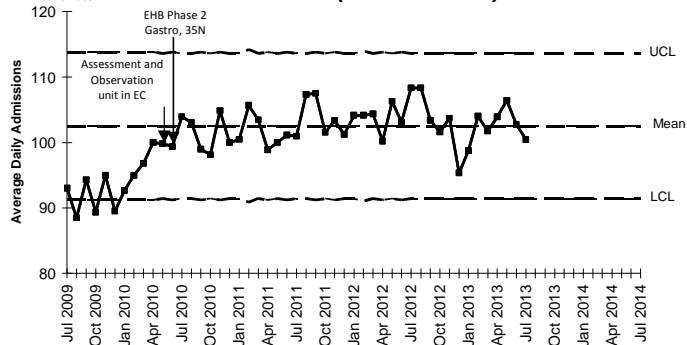
Monthly EC Presentations (growth lnR)



Emergency Care (EC) Presentations have shown a consistent growth pattern from July 2009 to date. There was a special cause with 8 points lying below the expected centreline, but this was not sustained with volumes returning to expected common cause variation

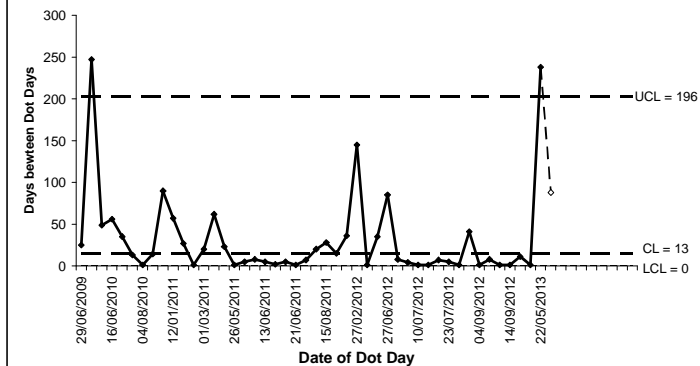
EHB Phase 1
Ward 33,34
June 2009

Admissions (Xbar / XBarS)



Admissions have shown common cause variation only since the Edmund Hillary Building (EHB) was completed mid 2010

Days between Dot Days (t-chart)



There were no Dot Days in July (last Dot Day -22nd May)

Notes

As the scope of the beyond 20,000 days campaign has expanded, the data for the admissions, length of stay and readmissions now includes ARHOP and Mental Health in addition to the Surgical and Medicine divisions.

The occupancy graph has been changed to reflect the 9 am census, the version displayed here is temporary as we are awaiting expert advice as to how best to display this as it is complex.

Beyond 20,000 Campaign Dashboard July 2013



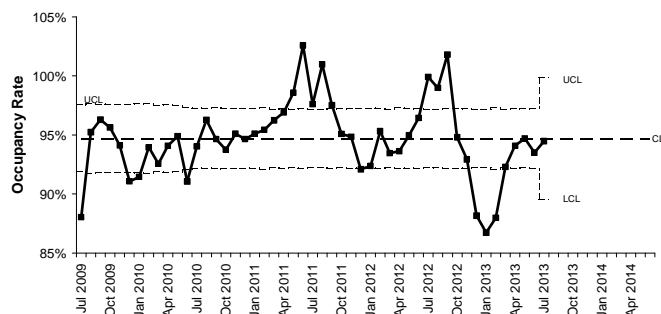
Analysis

The Dot day graph showed a special cause with 238 days between the last 2 Dot Days, this is the longest period between Dot days since our records begin in 2009 – the cause of this is multi faceted and will include the work of the 20,000 days phase 1 collaborative teams, the formalising of the criteria for calling a Dot Day, the winter plan and the proactive approach to avoiding a Dot Day (for example the email on 11th July advising of the potential for a hospital full day to occur early the following week). As at 30th July the last Dot Day was 22nd May (71 days).

Average length of stay has shown a sustained special cause dropping from 5.19 days to 5.04 – this equates to a reduction of 5,200 bed days for the 12 months (August 2012-July 2013)

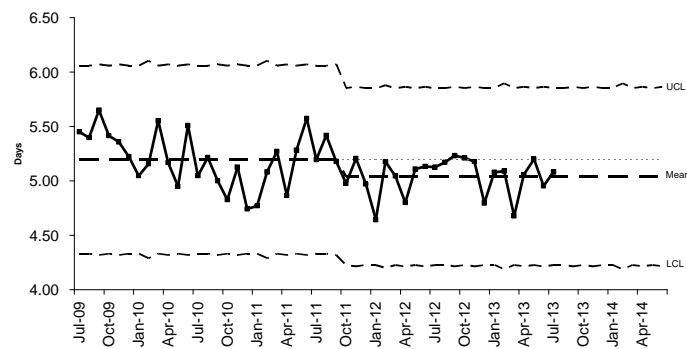
Admissions and readmissions both show normal variation only.

Occupancy Rate - based on 9am census (u-chart)



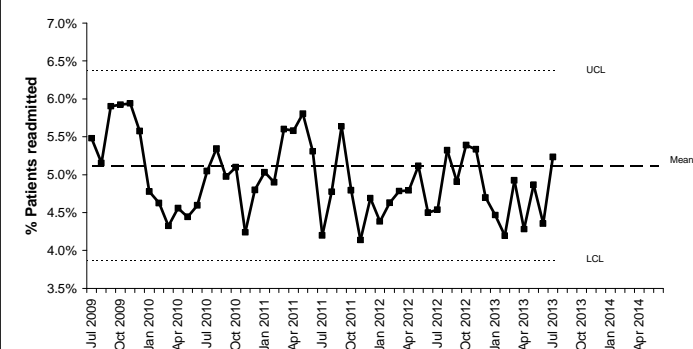
There appears to be a seasonality element underlying the occupancy rate, so this is being investigated and the best way to display this is being discussed with experts from the IHI

Average Length Of Stay (Xbar graph/XbarS)



Average length of stay has decreased from our baseline (July 2009-June 2011) and shown common cause variation at a reduced level since November 2011

Readmissions (P Chart)



Readmissions have shown common cause variation only

EC Presentation

This graph represents the Average daily presentation to MMH emergency care.

Operational Definition

Criteria

All presentation to MMH Emergency department
This figures include adult and Paediatrics

Admission

This graph shows the admission of acute adult patient admitted to Middlemore over a period of time.

Operational Definition

Admission: Patient admitted to MMH inpatient wards for more than 3 hours from the 1st seen by time

Criteria

Middlemore, Age >-15 years, Surgical (incl Gynae), Medical, ARHOP and Mental Health specialties

Trigger /Dot Days

This Graph chart shows the days on which date the hospital was full and also the days between two Dot days. Hospital full days are also termed as Dot days. One of the aim is to minimise the Dot days and increase the time between Dot days. One of the contributing factor to achieve this is bed day saving

Operational Definition

Dot Days: A day is referred as "Dot Day" when Middlemore central send an email when the Hospital is full.
Date of Dot Days: The actual date when the email was sent.

Criteria

All emails sent by Middlemore central with a subject "Hospital full"

UCL: Upper control Limit is automatically calculated by the software it selves.
CL: Centre Line can also be called as Average.
LCL: Upper control Limit is automatically calculated by the software it selves.

Note: The graphs will help us to detect Shifts, Trends and variations. The lines within control limits indicate that the data is stable and in Statistical control.

20,000 Days Campaign Dashboard Definitions



Occupancy

This graph reflects the occupancy rate (%) at the 9am census

Operational Definition

Occupancy: numerator – the average number of beds occupied at 9am during the month
Denominator – the average number of beds open at 9am

Criteria

Middlemore, Age >-15 years, Surgical/Medical specialty (incl Gynae). Occupancy excludes: MSSU and Observation

Average Length of Stay (ALOS)

This graph reflects the ALOS over a period of time.

Operational Definition

LOS: Days between admission to discharge

Criteria

Middlemore, Age >-15 years, Surgical(incl Gynae), Medical, ARHOP and Mental Health specialties

Unplanned Re admission

This graph shows the readmission rate over a period of time.

Operational Definition

Re-admission: numerator - An unplanned acute readmission to same speciality as discharged within 7 days
Denominator – total number of admissions

Criteria

Middlemore, Age >-15 years, Surgical(incl Gynae), Medical, ARHOP and Mental Health specialties. Data extracted based on Inpatient discharged location