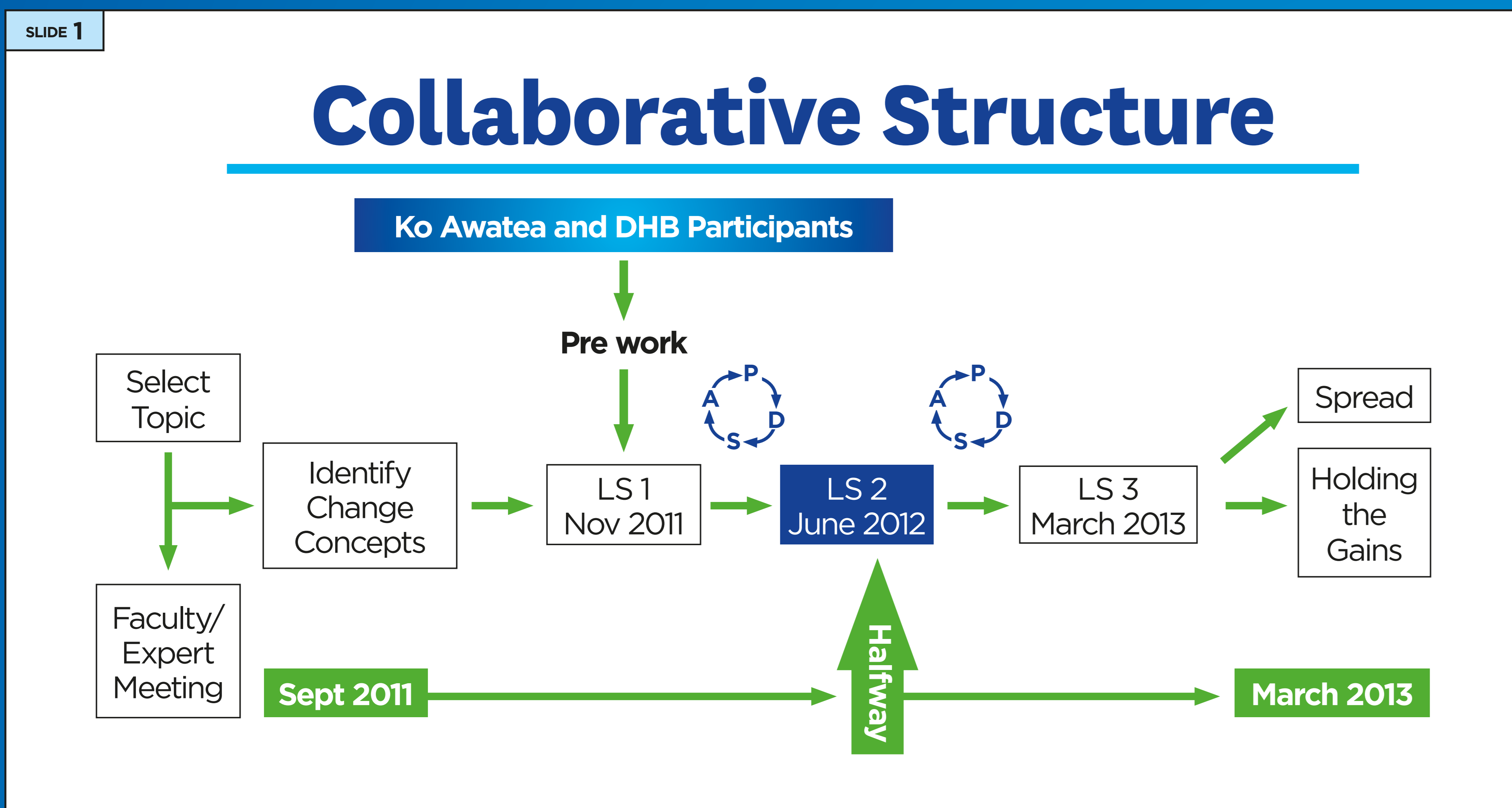


CLAB is Preventable

Target CLAB ZERO

Central Line Associated Bacteraemia



National Progress Map June 2012

- Insertion Bundle
- Insertion Bundle & Maintenance Bundle
- Insertion Bundle & Maintenance Bundle & Rollout
- No Central Lines inserted

Insertion Bundle

- ✓ Hand Hygiene
- ✓ Chlorhexidine Skin Antisepsis
- ✓ Maximum Barrier Precautions

Maintenance Bundle

- ✓ Daily necessity review
- ✓ Dedicated port for TPN
- ✓ Daily site check
- ✓ Chlorhexidine prior to each access

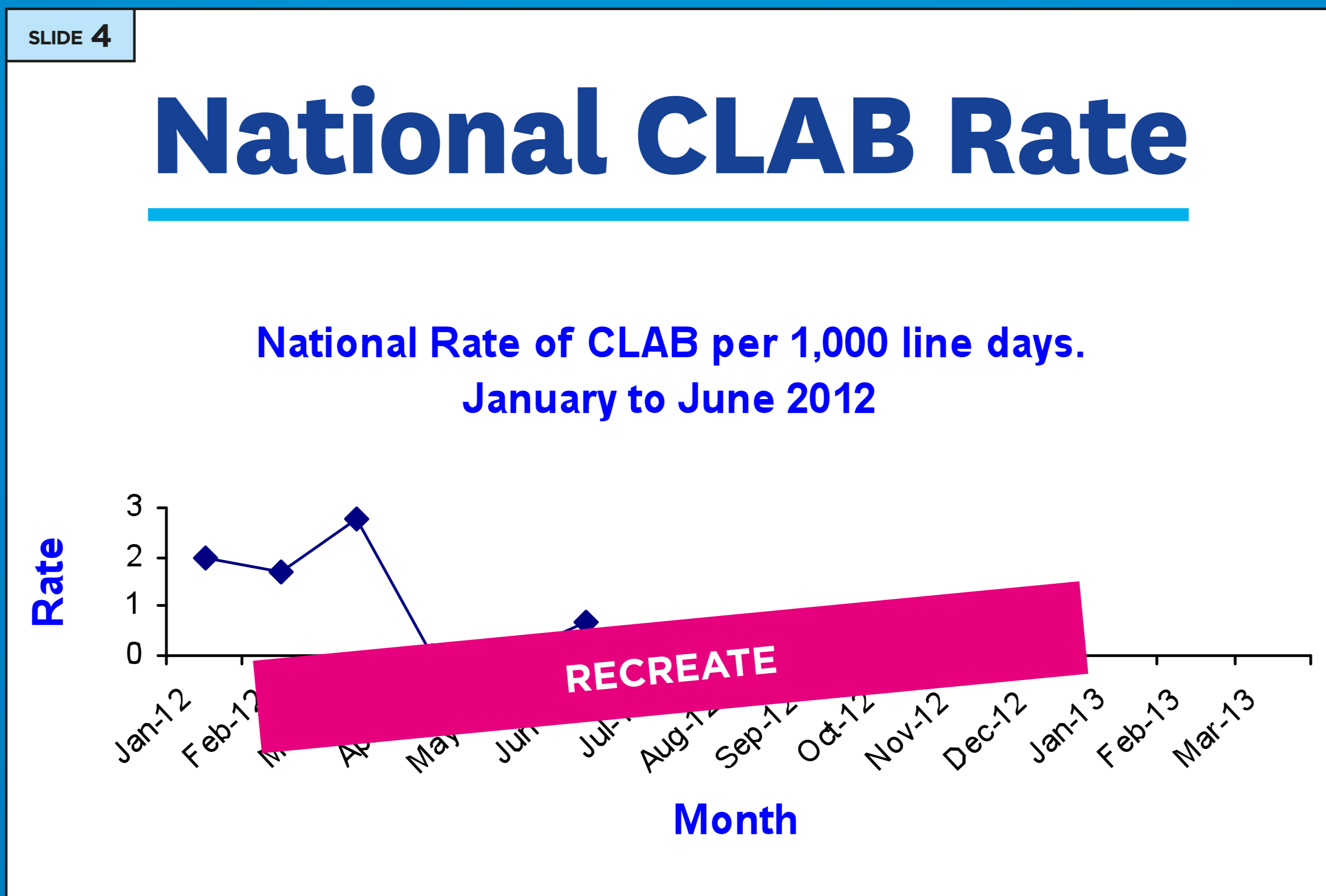
CLAB is Preventable

Middlemore Hospital CLAB savings for the period June 2011 to May 2011. 220 bed days approx.

\$520,000

National Programme savings estimate **\$1.4 million per annum**

Better patient experience | Decreased hospital stay | Reduction in patient harm



Great Effort

National No of CLABs Summary

Jan	Feb	March	April	May
4	4	7	0	0

ZERO CLAB April and May 2012

What have we achieved?

- Reduction of national CLAB rate from 3.32/1000 line days to 1.05/1000 line days
- ZERO CLAB nationally for April and May
- Active engagement with IP&C teams
- Strengthening of regional networks
- Agreed operational data definitions
- Communication plan
- Capacity and Capability in the implementation of the Model for Improvement
- A national insertion pack currently undergoing ongoing improvement and development

Future Work

- Building on the systemised national approach
- Alignment with minimal surveillance requirements
- Alignment to CDC Definitions and criteria
- Standardisation of key processes
- Reliable, robust monitoring, data collection & reporting
- Roll out
- Building sustainability

Insertion Pack

We are what we repeatedly do. Excellence! therefore, is not an act but a habit. Aristotle