



HEALTH QUALITY & SAFETY
COMMISSION NEW ZEALAND
Kupu Taurangi Hauora o Aotearoa



Collaborative to Prevent Central Line Associated Bacteraemia

National Collaborative to Prevent Central Line Associated Bacteraemia Storyboard

DHB: Tairāwhiti DHB

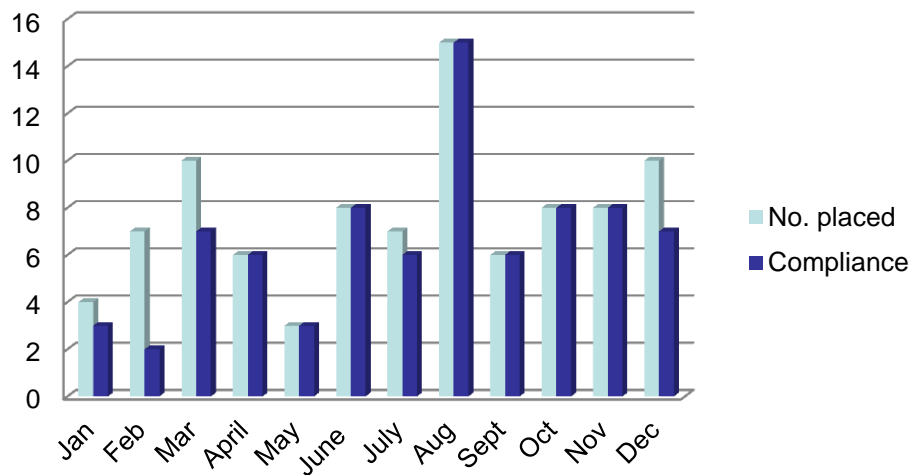
Team members:

Insertion Bundle

- *Check List has been through the PDSA cycle several times to ensure we able to capture all central line that are placed are collected.*
- *ICU, Theatre and ED only place where line are placed. All now have packs*
- *Compliance increased for placement*



Central Lines Placed

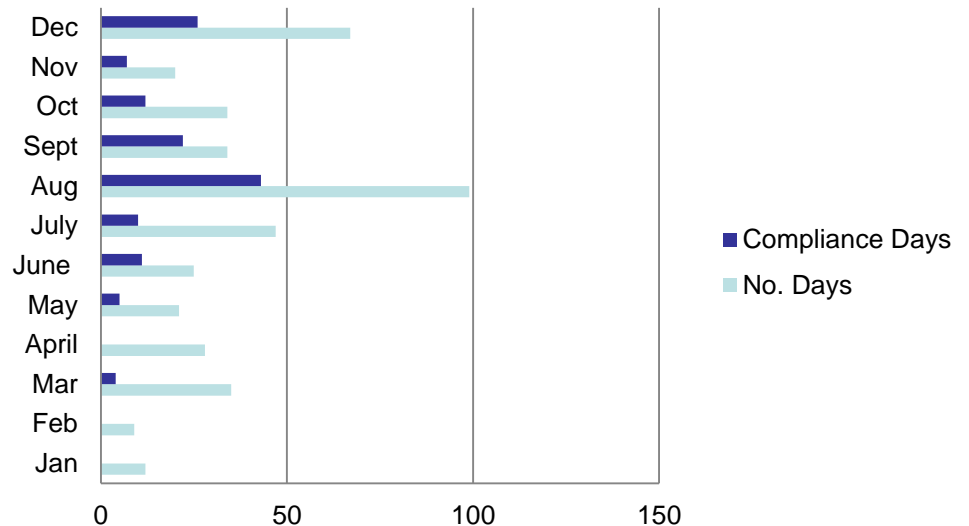


Maintenance Bundle

- Bundle has been through numerous PDSA cycle after feed back from staff
- ICU staff have adopted the bundle well with a few exception
- Use of trendcare to id staff and discuss issue
- Staff buy in has been slow in wards, use of presentation and individual approaches.
- A Champion on the Wards good results
- More work with staff and manager to get greater understanding



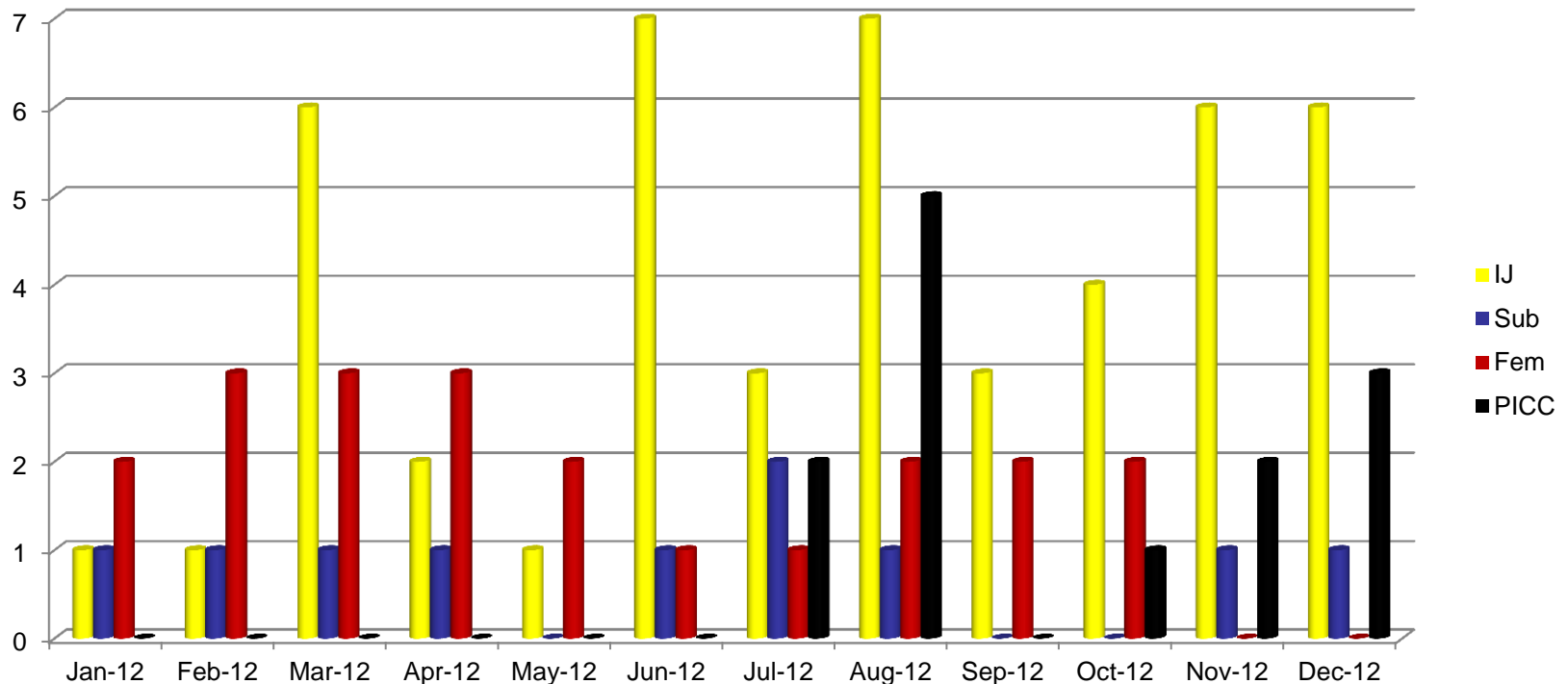
Maintenance Bundle Compliance



Line Placement at TDH

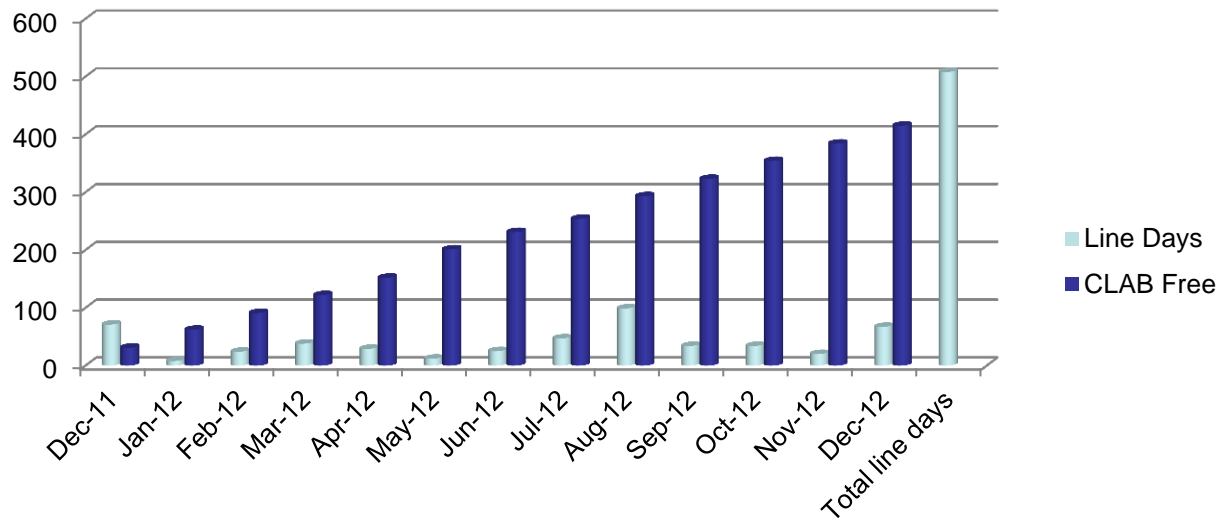
At TDH over 40 % of line were place femoral over the life of the project, the change in practice to place them IJ can been to be the majority.

We also have be including PICC placements since July 2012

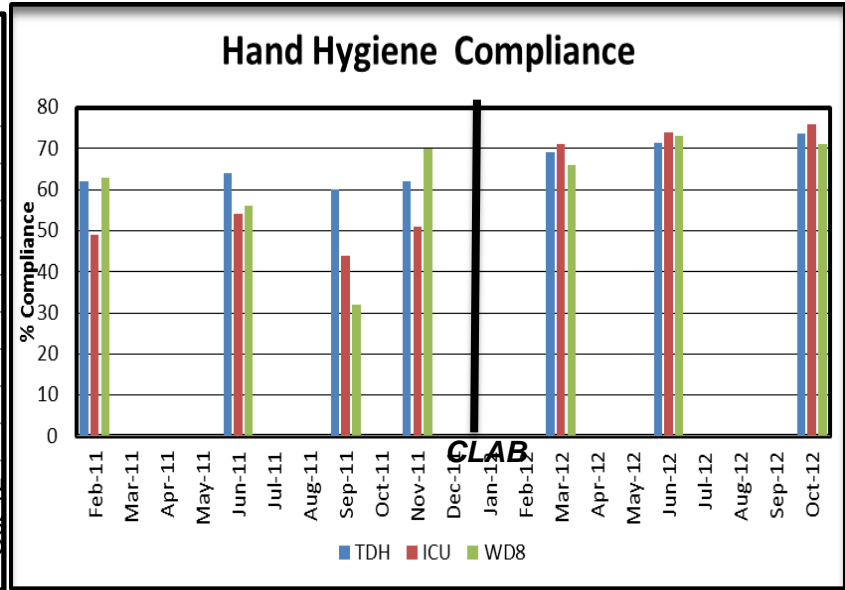
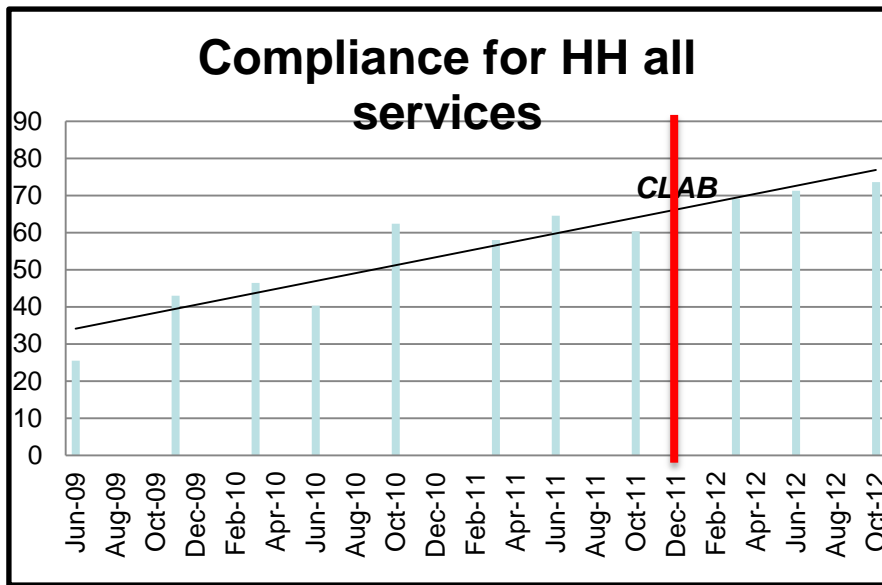


Progress

- Excepted CLAB definition
- Use of Medlab Microbiologist/BOP ID Consultant
- Implemented blood culture collection protocol



Benefits



- Scrub Hub (15 sec)
- Alcohol/Chlorhexidine wipes
- Naked below elbow
- Wards Maintenance for Feb was 89% after selection of a ward Champion