

# Right time, right place, right information

A shared South Island electronic health record supports the delivery of timely, high quality health care for all South Island residents.

## Our challenge:

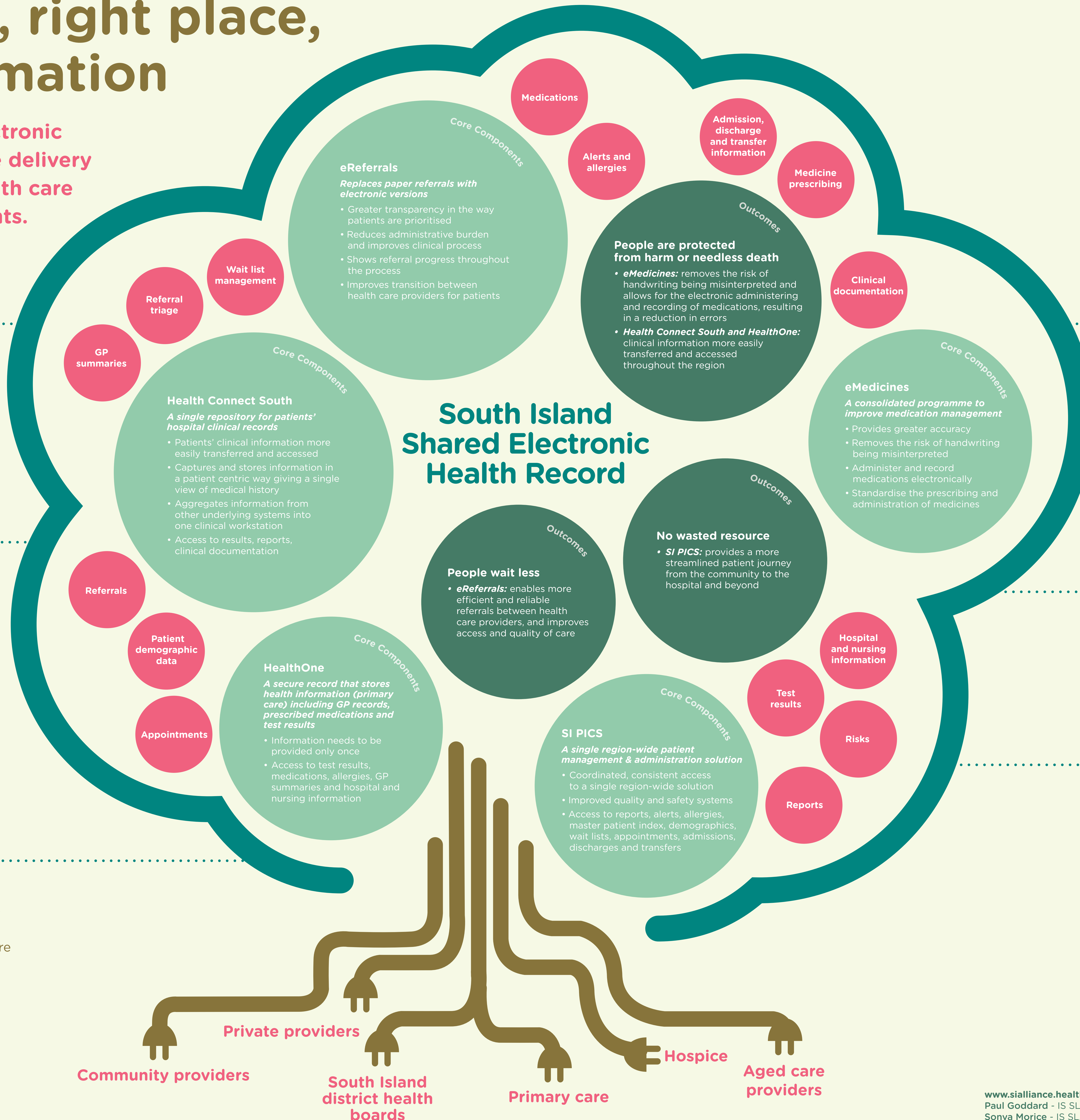
- To provide a patient-centric view of patient health data to enable care to be effectively provided across the South Island health system.
- To make sense of multiple complex systems across a variety of health care environments
- To create a health system that speaks a common language

## Where we were:

- Multiple standalone information systems or programmes resulting in siloed systems that are different
- Risks in holding electronic information in unconnected systems and relying on paper records – creating an information vacuum
- Legacy systems
- Information stored multiple times in multiple places
- Inability to share patient information
- Everyone working in isolation – resulting in duplication of information, effort, energy and spend

## What we needed:

- Better access to health information across the system, where and when needed
- Well-designed, easy to use systems that are closely aligned with clinical workflows
- All patient information linked up into a standard electronic medical record accessible from anywhere



Our South Island shared electronic health record has five core components:

- eReferrals
- South Island Patient Information Care System (SI PICS)
- Health Connect South
- eMedicines
- HealthOne

## Our response:

- Implement innovative technical software
- Consolidate health information into one place
- Implement a platform that lets us consistently and widely share information and integrate services across hospitals and communities
- Deliver the same high quality health services to all South Islanders, no matter who they are or where they live

## Where we are:

- Replacing legacy solutions with one regional platform
- More efficient, safer transfer of patient information
- More complete health information is available to the people providing care

## Benefits:

- Provides access to vital and reliable patient health information electronically wherever and whenever it is needed, providing faster, safer, better informed care
- Ultimately, South Island people will experience a continuum of care where health system boundaries are no longer relevant
- Improved patient safety and more integrated care
- Unified, consistent care across the South Island